





**A Member Of
Housing Trust Association Of Zimbabwe**

REGISTRATION NUMBER : MA0000230/2011

info@rhpt.co.zw

www.rhpt.co.zw

facebook.com/RoyaleHousing

Head Office / Harare Branch
142 Kwame Nkrumah / 6th St
(0242) 706358
0773250325
0772354450

Bulawayo Branch
Room 406, 4th Floor
Africa Hse, 5th St & 10 Ave
(09) 881947 / 0776016621
0772984637 / 0773250325

Mutare Branch
Office 1 & 2, 3rd Floor,
CAI PF Building, 3rd St
0772658284 / 0773250325
020 2020035

Mutoko Branch
154 Ivonfrey Complex,
Oliver Newton Rd, Mutoko
0773250325 / 0774555525
065 2132812 / 0772866428

Chivhu Branch
Stand No. 383, Desai Hse
York St, Chivhu
0776995481 / 0774555525
054 2122309

Mt. Darwin Branch
Stand No. 108
Agribank Complex, Mt Darwin
0662122243 / 0784526322
0773250325

VISION

Our vision is to be the leading and most trusted property brand developer and contractor by creating aspirational and sustainable developments and communities

MISSION STATEMENT

We passionately make property ownership accessible to all humanity

CORE VALUES



1.Trust & Integrity

Board members and all employees conduct themselves with utmost honesty and integrity, revering a steadfast RHPT culture of assuring all stakeholders the highest moral and ethical standards AT ALL TIMES.

2.Respect & Discipline

We respect all human beings and accord them equal treatment with zero tolerance to discrimination of any kind.

3.Accountability & Transparency

Our organization prides itself in being committed and unwavering to transparency and accountability in all our business transactions.

4.Innovation

Royale Housing Projects Trust is committed to continuous improvement through the application of new concepts, strategies and creative technology approach to build eco-friendly communities.

5.Professionalism

Royale Housing Projects Trust will deliver its stated mandate by applying the highest ethical standards in all that we do through qualified and experienced staff.



OUR HISTORY

Who we are: Established in 2011, Royale Housing Projects Trust is today a trusted property brand, developer and contractor in Zimbabwe. Royale Housing Projects Trust is a leading land developing entity with projects running in many towns of Zimbabwe. We create high quality properties and property developments at affordable rates. Headquartered at 142 Nkwame Nkrumah and 6th Street, Harare, Zimbabwe and operating in over 5 branches, we offer accessibility convenience to our clients



OUR REFERENCES & PARTNERS

- ~ Pfura RDC
- ~ Mutoko RDC
- ~ Mutasa RDC
- ~ Umguza RDC
- ~ DripTech
- ~ Property Junction
- ~ Holla Electrical

Our Bankers: CABS & ECOBANK

OUR PURPOSE

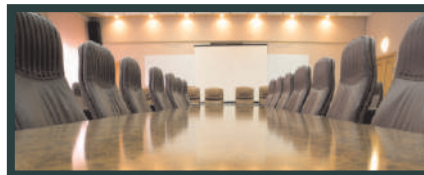
- a) Land buying and selling
- b) Subdivisions, Surveys and Town Planning
- c) Civil Construction, and Super Structures Construction
- d) Plant Hire Services

We also assist the less privileged

CORPORATE STRUCTURE

Governance

The Trust is managed by a Board of Trustees working in various sectors of the system ranging from Finance, Land Procurement, Project Planning and Project Development, Membership Recruitment Drive, Human Resources and Corporate Governance. All trustees are subject to retirement and reappointment by the shareholders and founder member in every five years in accordance with the requirements of The Deed of Trust, the board approves all new appointments. The Board of Trustees is the superior authority on policy and programming, and mobilises resources for the smooth running of the organization.



Board of Trustees

The Board of Trustees of Royale Housing Projects Trust comprises of three (3) registered Trustees both with a wide range of expertise as well as significant professional and commercial experience.

Management

Management teams have operational decision-making responsibilities and accountability. This gives them the authority which should result in operational efficiency.

Lawyers and consultants

Our organization prides itself in its competent in-house legal division headed by a Corporate Secretary who is a qualified legal practitioner. We also consult and synergize with a reputable Law firm in the country for all our legal requirements.

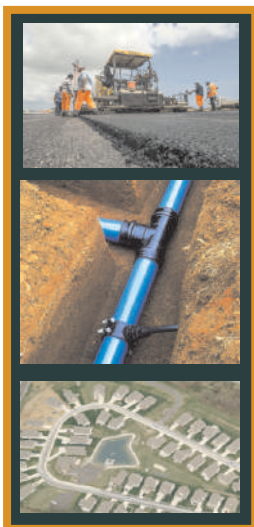
OUR PRODUCTS / SERVICES

We strive to enhance customer value by offering high quality products at competitive prices.

Our products are as follows:

1. Infrastructural Development.

Servicing of stands from residential, high to low density,



growth points suburbs', commercial, industrial stands and flat sites.

- Road Construction
- Sewer reticulation
- Water reticulation
- Land Subdivisions & Consultancy



2. Building Construction

- Site Plans, House / Commercial Property Construction
- Construction of Schools, Complexes and Security Walls

3. Construction Material

- Precast Material: Bricks, Pavers, Zesa Poles, Culvert Concrete Pipes
- Window and Door Frames, Roofing Trusses

4. Electrical Installations

- Industrial and Mining, Domestic

Packaged Stands.

To our valued customers, we offer various options of three approved plans for your choice should you buy a stand from us. We have a further option of undertaking the construction of your home on your behalf. Payments for the construction of the property will be made in stages until all the work is finished. Most of those working abroad suffer prejudice and lack of accountability for funds remitted home for construction. We have a division that has construction expertise and payments will be done in phases as follows:

- >Payment of deposit to cover the plan and approvals,
- >Then deposit for material to start foundation level,
- >Window level deposit, then
- >Roof level and then
- >Interior (floors, carpentry, ceiling, etc) and finally
- >Exterior (driveways, durawalls, etc)



Property development in building houses and commercial property.

Some of our projects come in the form of cluster homes, garden flats, high rise flats and core housing units. We do have sites earmarked for all kinds of developments and we guarantee quality homes at competitive prices. We will officially announce the launch of these projects once all modalities and feasibilities are completed.

Current Projects



WEIRMOUTH (Mutare)

- ~Size 450sqm
- ~Price \$35/sqm
- ~50% Deposit
- ~Balance within 12 months



FAIRVIEW / TSVINGWE (Mutare)

- ~Size 450 - 1100sqm
- ~Price \$25/sqm
- ~50% Deposit
- ~Balance within 12 months



ALLOA BROOKE (Rusape)

- ~Size from 1000sqm
- ~Price \$12/sqm
- ~50% Deposit
- ~Balance within 12 months



GLENVIEW (Harare)

- ~Size 200sqm
- ~Price \$70/sqm
- ~50% Deposit
- ~Balance within 9 months



ROYALE HAVENS (Bulawayo)

- ~Size 200sqm
- ~Price \$40.50/sqm
- ~50% Deposit
- ~Balance within 18 months



CHOMFULI (Gutu)

- ~Size 1000 - 2000sqm
- ~Price \$8.50/sqm
- ~50% Deposit
- ~Balance within 12 months



ROYAL PARK (Mutoko)
 ~Size 450 - 900sqm
 ~Price \$12/sqm
 ~50% Deposit
 ~Balance within 18 months



GREATERHEIGHTS (Chivhu)
 ~Size 1000 - 1500sqm
 ~Price \$10/sqm
 ~50% Deposit
 ~Balance within 18 months



MT DARWIN
 ~Size 450sqm
 ~Price \$13/sqm
 ~50% Deposit
 ~Balance within 18 months



Construction Material & Services

Building Construction

~ Site Plans, Houses, Shops,
Complexes, Security Walls

Electrical Installations

~ Industrial & Mining, Domestic

Precast Material

~ Zesa Poles, Pavers, Bricks,
Culverts Concrete Pipes

Frames

~ Window, Doors

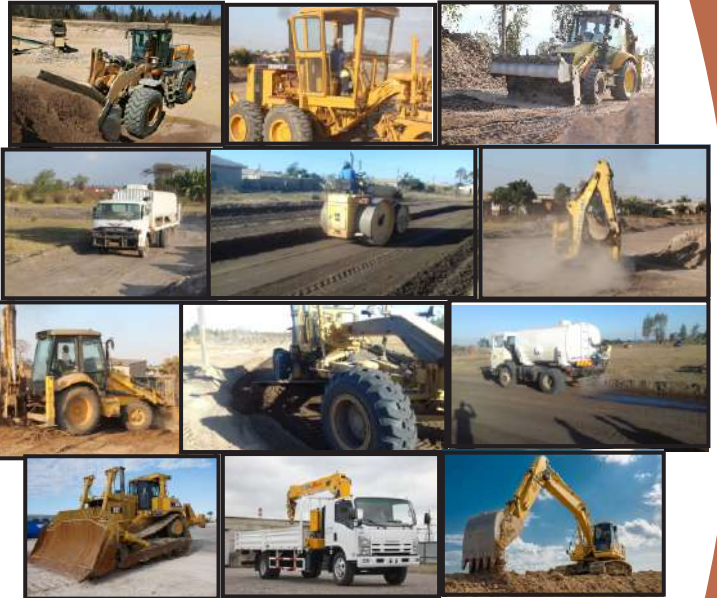
Roofing Trusses

Plumbing

Tiling



Our Fleet



**Grader, JCB, Tipper, Compacter,
Front End Loader, Excavator, Dozer,
Truck Crane**

WHAT IS UNIQUE ABOUT US AND WHY YOU SHOULD BE PART OF US

It is not only what we deliver that sets us apart from others but how we deliver it. There are many reasons why we believe we are your ideal investment choice for transforming your accommodation and other property development fantasies into tangible realities:

- i. We strive to surpass your expectations by providing excellent customer care. We are never too busy to return a call or e-mail. You will get personal, expert attention at all times, which means that you will always know the status of your project.
- ii. Our pricing is exceptionally competitive given the level of service and expertise that we deliver. Our growing experience in the development business has given us the insight to select the right partners, consultants' e.g engineers, soil scientists, financial advisors.
- iii. We realize that time is money. More often than not, most of our valued customers are amazed at the quality of work we deliver even in difficult times and within strict deadlines. We strive to surpass your highest expectations.
- iv. We are growing entity composed of young vibrant professionals willing to be the client's first choice in the region.
- v. We pride ourselves and excel on the merit of our impeccable reputation. To date we have managed to build a solid track record with clients, partners and project investors in Zimbabwe.
- vi. We do not just develop land on our own but we listen to your ideas and wishes, incorporating the same to mould a design that accomplishes your desired end product.

You will absolutely build realities out of dreams & fantasies!



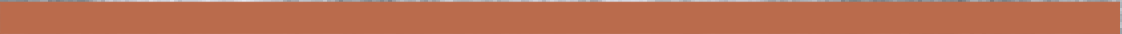
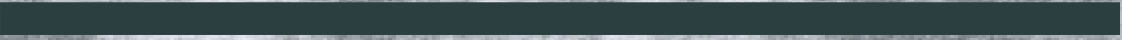
building
realities
out of dreams
& fantasies



rhpt.co.zw



rhpt.co.zw



Design & Print By Skyview Media 0773 552 375